



**STANDARD FEATURES:**
**DUAL VOLTAGE CONNECTIONS**

Increase flexibility by enabling the installer to select the required voltage, within phase, to meet job-site requirements.

Within phases, voltage is selectable at the time of installation with the placement of a connector.

- Single-Phase: 115V and 230V
- 3-Phase: 208V, 230V and 460V
- 575V is a discrete model without field-selectable voltage

**INTERNAL DOOR LOCK SENSOR**

Eliminates jamming and damage to door and operator if door is opened when locked.

**FLOOR LEVEL DISCONNECT**

Enables manual lifting in an emergency.

**CONTROL FUNCTION SELECTOR DIAL**

Enables easy selection and programming of (7) wiring types, from constant pressure to close, to specialized Timer-to-Close functionality to meet end-user needs.

**TIMER-TO-CLOSE**

Conveniently and confidently closes the commercial door automatically after a predetermined amount of time has elapsed for added security and peace of mind.

**CONTINUOUS-DUTY HIGH-STARTING TORQUE MOTOR**

Performs in demanding industrial overhead and rolling door applications.

**MOTOR REMOVABLE WITHOUT AFFECTING LIMIT SWITCH SETTINGS**

Saves time and money for maintenance.

**ADJUSTABLE FRICTION CLUTCH**

Helps to protect door and operator from damage should the door meet an obstruction.

**MID-STOP**

Enables partial opening of door to a preprogrammed position for energy savings, time savings and convenience.

**MAXIMUM RUN TIMER**

Reverses or stops door if closing time exceeds expected time-frame to limit damage to door and operator.

**DELAY-ON-REVERSE CIRCUIT**

Prevents abrupt reversal of door, reducing wear on the door and operator system.

**SPECIFICATIONS:**
**SECURITY+ 2.0™ RADIO RECEIVER**

Standard on-board with Logic 5.0 operators. Accepts up to (90) single-button or (30) 3-Button remote controls plus up to (30) wireless keypads or an unlimited number of DIP switch remotes.

**MOTOR**

Continuous-duty high-starting torque motor with instant reverse and overload protection. Available in 1/2 and 3/4 HP; single- or three-phase. Capacitor start on single-phase. Removable without affecting limit switch settings.


**ENTRE/MATIC**
**WIRING TYPE**

Operators are factory preset to C2 wiring, providing momentary contact to open and stop, with constant contact to close. Monitored entrapment protection, using approved photo sensors or sensing edges is optional, although recommended, when using C2, D1 or E2. All other wiring types, B2, T, TS and FSTS can be selected with the addition of an appropriately monitored entrapment protection device (LiftMaster® CPS-U photo eyes, LiftMaster OES monitored sensing edge, or a monitored sensing edge supported by the CPS-EI, as examples). Logic 5.0 operators can only accept UL-Approved LiftMaster monitored entrapment protection devices.

**CONTROL CIRCUIT**

5V DC NEC Class 2.

**DRIVE REDUCTION**

First-stage heavy-duty 5L V-belt; second-third-fourth stages #48 chain; #50 output sprocket chain.

**BEARINGS/BUSHINGS**

Industrial ball bearings on a 1" output shaft; heavy-duty oil-filled bushings on reduction shafts.

**BRAKE**

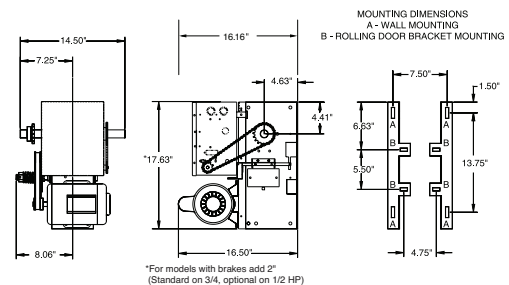
Standard on 3/4 HP operators (optional on 1/2 HP).

**CONSTRUCTION**

NEMA 1 type electrical box, heavy-duty 11-gauge steel frame with durable powder coat finish, all reduction sprockets drilled and pinned to shafts.

**WARRANTY**

Two Years.

**TECHNICAL INFORMATION:**


MAXIMUM DOOR AREA (SQ. FT.)						
ROLLING	24 ga. Steel	22 ga. Steel	—	20 ga. 18 ga. Steel	16 ga. Steel	—
	Aluminum Grilles	Aluminum Doors	—	Steel Grilles	—	—
SECTIONAL	—	24 ga. 22 ga. Steel	20 ga. Steel	—	16 ga. Steel	—
	Fiberglass	Aluminum Doors	Wood Doors	—	—	—
	—	—	24 ga. Steel Insulated	—	20 ga. Steel Insulated	16 ga. Steel Insulated
HP	1/2	400	350	320	280	250
	3/4	560	500	450	380	325

NOTE: On steel insulated doors, a 24-gauge back panel is assumed. If a heavier back panel is supplied, use the next higher HP rating. Recommended Duty Cycles: Up to 25 per hour, up to 80-90 per day.